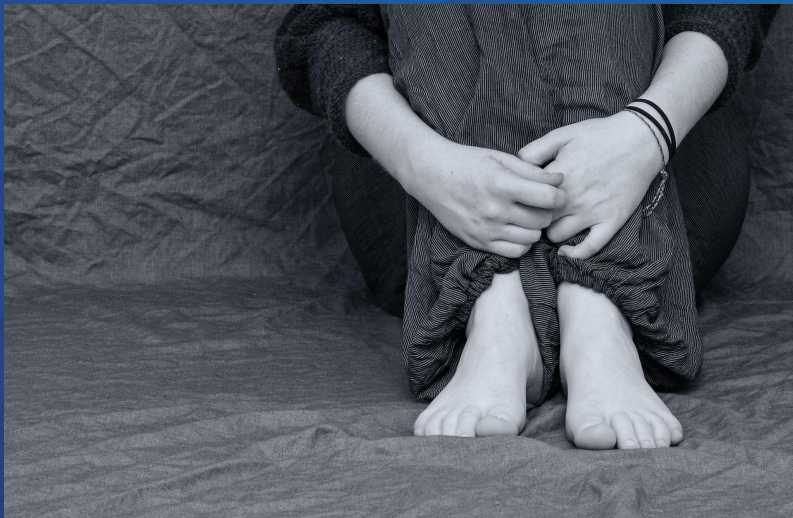


OMSSA EXCHANGE

MAY 2-4, 2022 | VIRTUAL

BREAKOUT



Improving Intake and
Assessment: Using
Equity-Based and
Trauma- and
Violence-Informed Care
Approaches

PANELISTS



Moderator: Heidi Van Dyk, Acting General Manager, Health & Social Services, County of Norfolk



Maya Ingrao, Housing Support Worker, Homeless Prevention Services, County of Norfolk



Louise Lovell, Program Manager, Homeless Prevention Services, County of Norfolk



Megan Phillips, Registered Psychotherapist, Phillips Psychotherapy Services



Sandra Rupnarain, Executive Director, Family Services of Peel



Monica Riutort, Manager, Peel Institute on Violence Prevention, Family Services of Peel

Panelists slides





FSP Framework on Equity, Anti-Oppression, and Anti-Racism: Trauma-informed and Trauma Specific Training.

Sandra Rupnarain and Monica Riutort May 2, 2022

Transforming Lives in Peel

Equality Vs. Equity

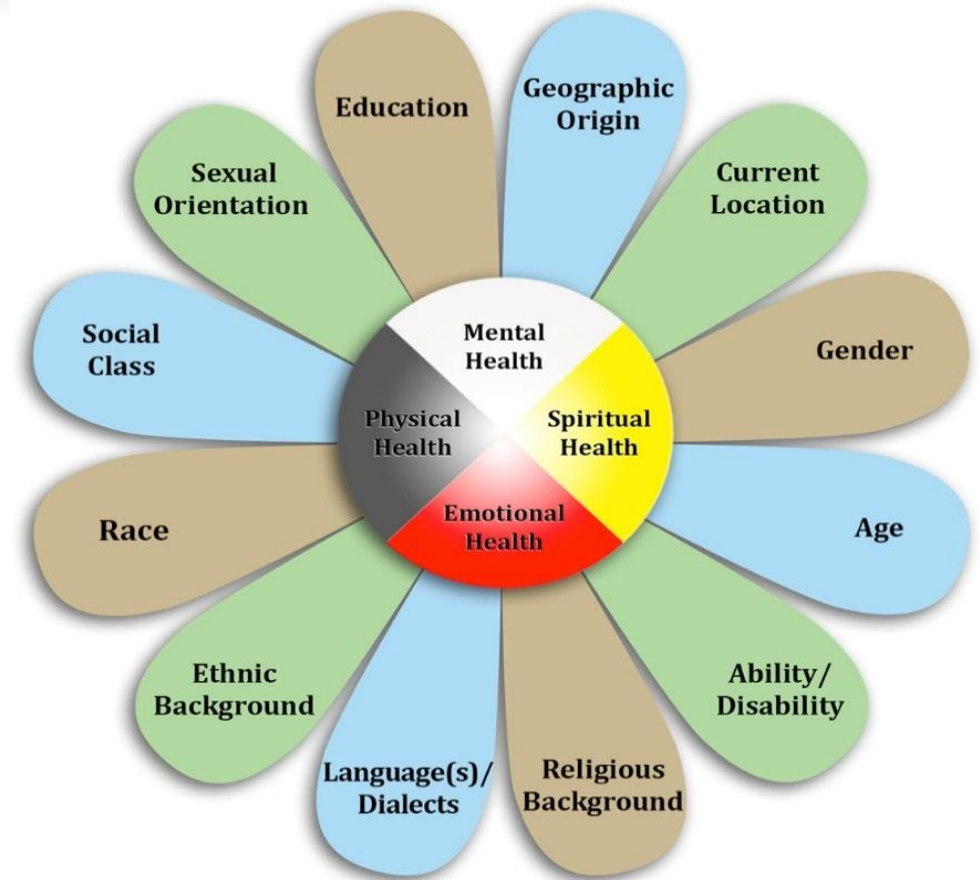


Equality ...doesn't mean... **Equity**

Mississauga Halton Local Health Integration Network.

Diversity

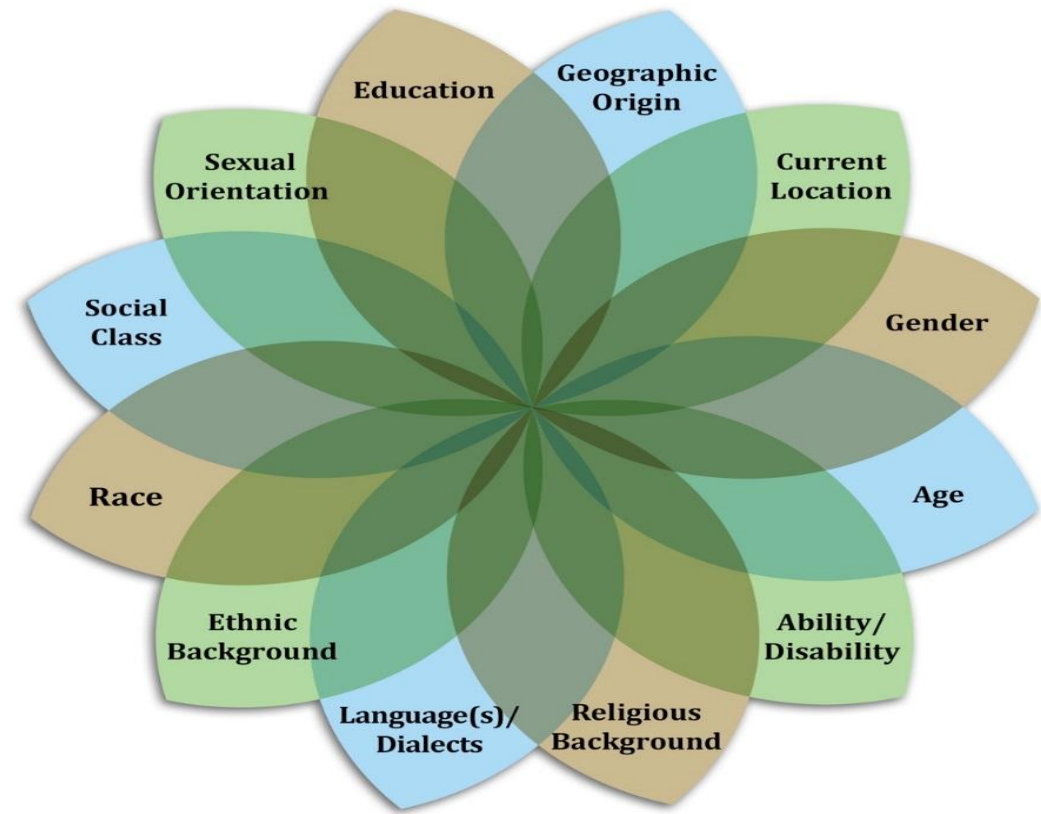
Diversity includes any dimension used to differentiate groups and people from one another. When talking about diversity in a workplace, we focus mostly on respecting and appreciating what makes employees different in terms of race, age, gender, ethnicity, religion, disability, sexual orientation, education, and national origin. It tends to hide power relations and social justice.



Intersectionality

Intersectionality (Crenshaw 1989)

“A method for understanding the various ways interlocking forms of oppression affect individuals.”

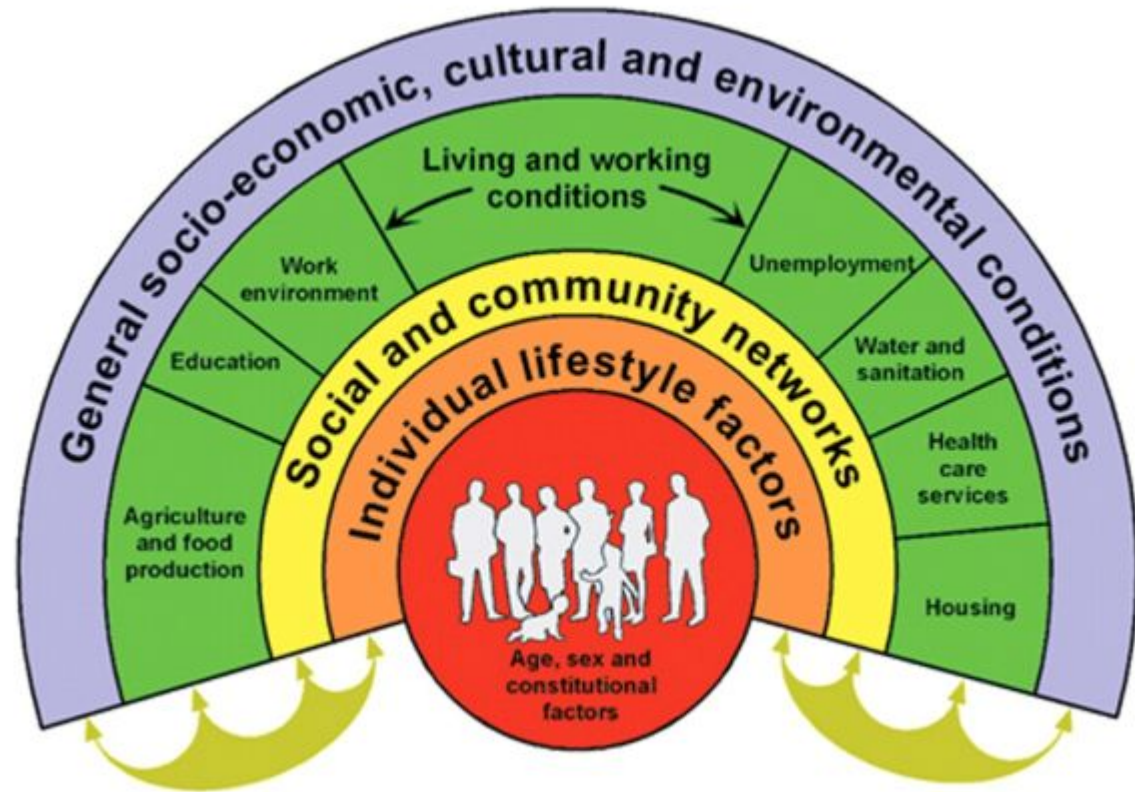


What Are The Social Determinants Of Health?

“The conditions in which people are born, grow, live, work and age. These circumstances are shaped by the distribution of money, power, and resources at global, national, and local levels” –WHO

Social Determinants of Health (Toba and Raphael 2020)

“Health- specific economic and social conditions that shape the health of individuals, communities, and nations as a whole.”



FSP Framework Equity, Anti-Oppression and Anti-racism

Essential definitions

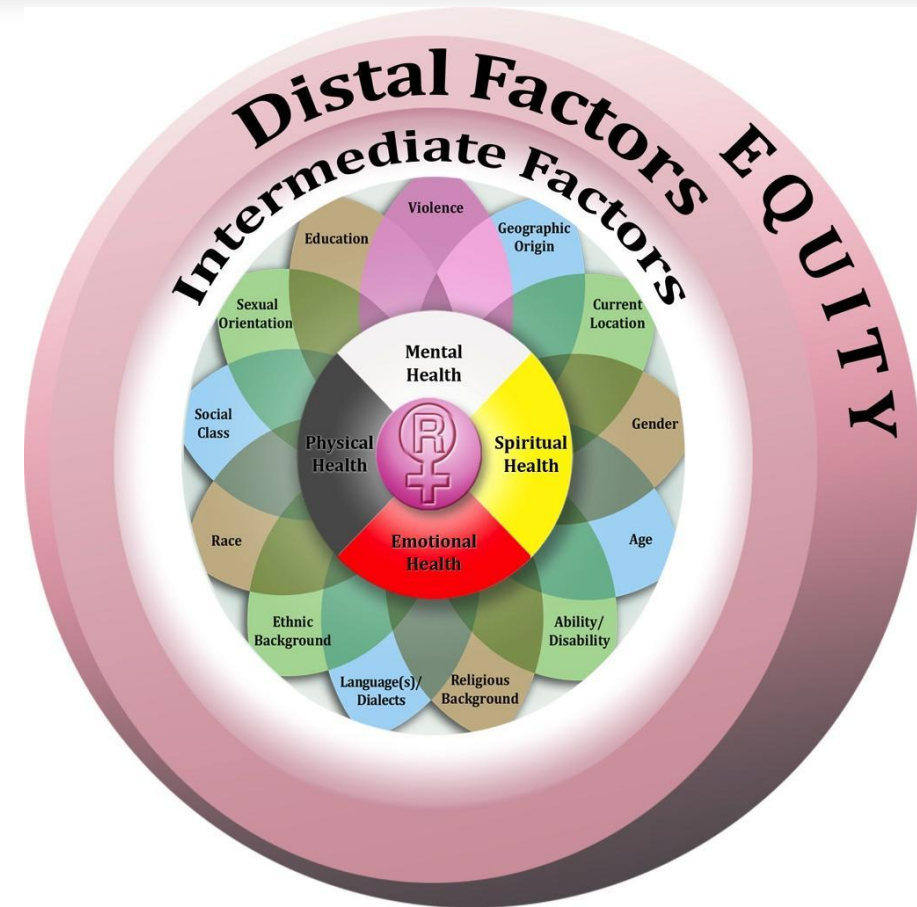
- Equity
- Equality
- Anti-Oppression
- Anti-Racism
- Gender
- Diversity
- Determinants of Health

Types of Determinants

Proximal: Most immediate behavioral and environmental factors to the individual

Intermediate: Community infrastructures, systems, resources, and capacities

Distal: Historic, social, political, and economic factors



Screening vs Assessment

Assessment and screening are essentially different psychometric procedures with different design and outcome aims.

Screening

The primary aims of screening are to be quick (relatively), time and cost efficient and to categorise people into groups (risk groups) with good accuracy. Screening reports should ideally be available immediately and they should be simple, clear and uncomplicated

Assessment

Assessment is a much lengthier and more complex process and although labelling is not always essential, assessment generally has the aim of reaching a diagnosis with advice

Trauma Screening Tool – the Questions

“Some people have noticed a connection with their current concerns and traumatic experiences.

These may involve unwanted experiences, exposure to difficult situations, or experiences of fear or loss. I have a few questions to ask you about any traumatic experiences that will help me to better support you. Are you ok with that?”

1. Have you had any experiences that were traumatic?
2. Are you currently being affected by these experiences? (ie: flashbacks, nightmares, panic attacks, dissociation etc.)
3. How often does this happen to you?
4. Have you received any support for these traumatic experiences or the effects?
5. What do you find helpful in dealing with these experiences?
6. If applicable, are you still in contact with those involved?
7. Are you grieving the loss of someone or something? If so, please explain.

Trauma Stewardship

A daily practice through which individuals, organizations, and societies tend to the hardship, pain or trauma experienced by humans, other living beings, or our planet itself.

Caring for ourselves while caring for others and the world around us requires developing a deep sense of awareness, enhancing our ability to engage oppression and ethically work for change.

- Laura van Dernoot Lipsky, 2009

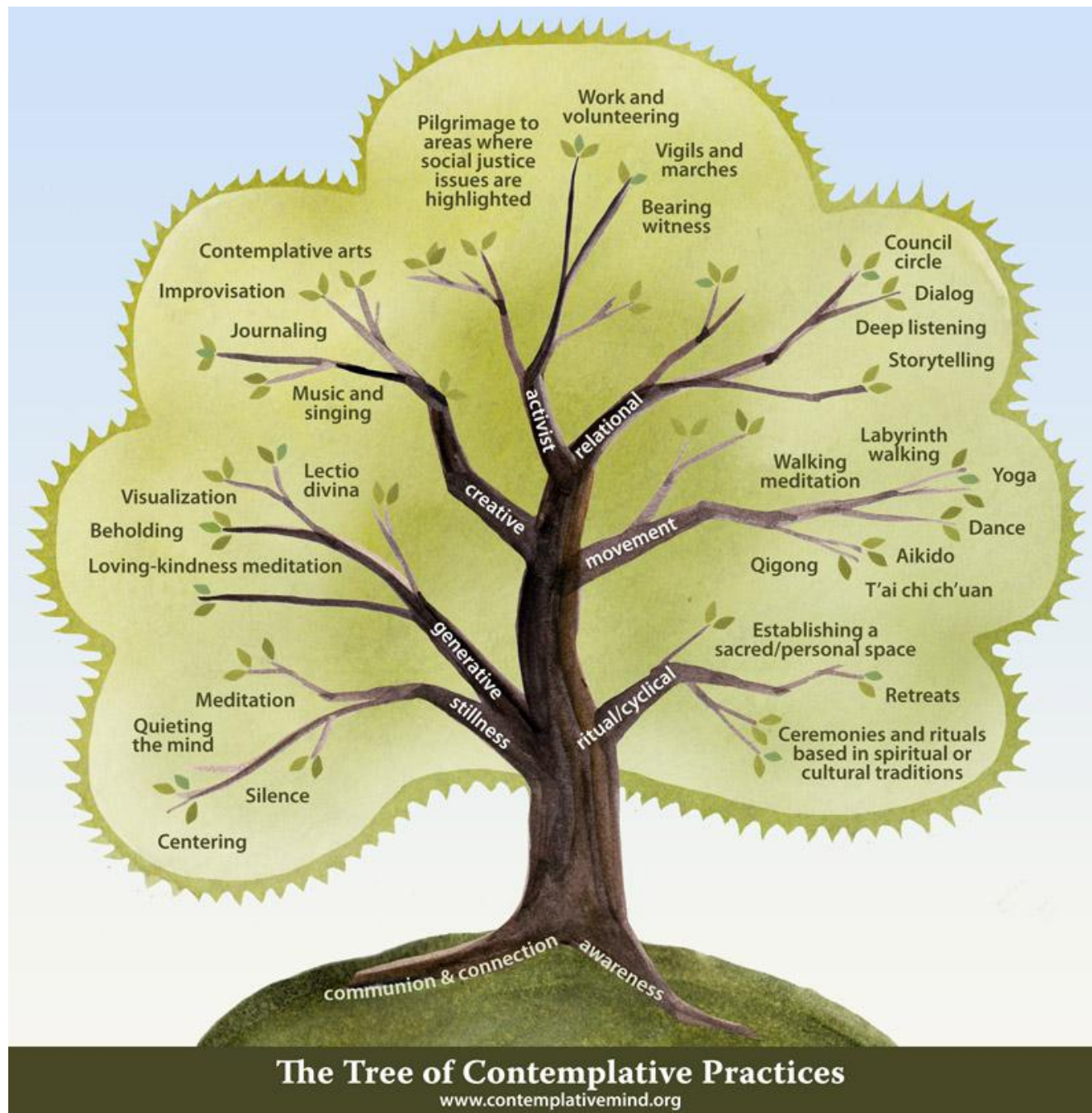
ABCs of Addressing Trauma Exposure Response

A – Awareness: practice mindfulness and acceptance. Attunement and compassion with one's needs, limits, emotions and resources. Paying attention to all levels of awareness and information.

B – Balance: maintain balance among activities – work, rest and play. Attend to all aspects of oneself for inner balance. Relax, self-soothe, experience joy and take in “the good”.

C – Connection: connect with self, others and to something larger (spirituality, sense of meaning, purpose). Break the silence and offset isolation. Increase validation and hope.

Adapted from: Pearlman, LA., Carling, J. 2009



**THANK YOU FOR
ATTENDING DAY 1!**

**We look forward to
seeing you for Day 2**





Maya Ingrao,
Housing Support
Worker, Homeless
Prevention Services,
County of Norfolk



Louise Lovell,
Program Manager,
Homeless
Prevention Services,
County of Norfolk



Megan Phillips,
Registered
Psychotherapist,
Phillips
Psychotherapy
Services



Sandra Rupnarain,
Executive Director,
Family Services of
Peel



Monica Riutort,
Manager, Peel
Institute on
Violence
Prevention, Family
Services of Peel